

- [Russia](#)

You are here: [Home](#) / [Featured](#) / Possible Fukushima Nuclear Fallout Projections For the U.S, Two Plants Meltdown Underway

# Possible Fukushima Nuclear Fallout Projections For the U.S, Two Plants Meltdown Underway

-->[51 Comments](#)



Update – 3:08am PST

CNN update on meltdown fears. **This will be the last update of the live blogging until tomorrow morning.** Officials are still assuming that at least one meltdown has happened. Russia Today is reporting that a meltdown at plant #1 is highly likely. RT was also quoted as saying that the fuel rods at the power plants have been damaged!

A city in the area has registered over 400 times the accepted amount of radiation. It has not been confirmed whether this is from the Fukushima #1 but experts believe it is.

## [CNN](#)

*Officials do not know for certain whether there have been meltdowns at two reactors in a nuclear facility in the northeast, said Yukio Edano, the Chief Cabinet Secretary.*

*They are working under the presumption that such meltdowns have taken place as they attempt to cool down radioactive material and release pressure inside the reactors at the Fukushima Daiichi plant, he said.*

## [The Intel Hub](#)

March 12, 2011 - 10:46pm PST

From Twitter: FLASH: #Japan chief cabinet secretary says risk of explosion at building housing #Fukushima Daiichi No. 3 reactor. Confirmed by Reuters and AFP.

[Stratfor](#) is reporting that the Japanese nuclear reactor container has been BREACHED!

Japanese Officials are now operating under the presumption that TWO reactors have either already melted down or are on their way to a meltdown. Critical core cooling systems have failed at both reactors. [This situation](#) has gone from bad to worse real quick.

U.S. nuclear officials have warned that we are in [“uncharted”](#) territory and that pumping seawater to cool the nuclear reactor is nothing short of an act of desperation.

“Sky News is [reporting](#) that up to 160 people may have suffered radiation exposure. Japan’s Nuclear and Industrial Safety Agency says people are being tested for radiation exposure.”

At the same time officials in Washington State have stated that Washington will face NO threat of radiation regardless of what happens. The idea that these officials can predict that at this moment is an absolute joke and very unprofessional.

Even in the event of a significant release from the reactor, radiation would be diluted before reaching our state and levels would be so low no protective action would be necessary, officials say, [reported King5.com](#)

- [Edano: Pressure, Radiation Levels Not Worsening At Damaged Nuclear Plant](#)
- [Another reactor at Fukushima nuke plant loses cooling functions](#)
- [Piers Corbyn: Massive Japan Earthquake & Tsunami Were Triggered by Solar Action](#)
- [Damaged reactor pictures](#)



Police in Gas Masks: Photo By Kaname Yoneyama / AP

“Seawater being poured into reactor to cool it; 170,000 being evacuated from area” [MSNBC](#)

The Japanese Ambassador says that a [Meltdown did not happen](#), while Japans nuclear agency [says it DID](#).

### WHO DO YOU BELIEVE?

*‘There is a possibility, we see the possibility of a meltdown,’ an official with Japan’s nuclear agency says in an interview with CNN, adding that he is basing this on radioactivity measurements near the plant Saturday night. But the Japanese ambassasdor to the U.S. tells CNN that there’s no evidence of a meltdown.*

### [Core of quake-damaged reactor partially melts](#)

Officials remain optimistic that it will not be as bad as Chernobyl. The body language of the Japanese Ambassador clearly indicates that this man is very scared and possibly knows much more then he is saying.

- [Problem with Reactor#3](#)
- [LHC RESTARTS – 8.9](#)
- [Japan Reports Emergency At Second Nuclear Reactor](#)
- [Japanese Nuclear Meltdown Confirmed](#)
- [UPDATE: LIVE UPDATES](#)

### Infowars

### [Media Coverup of Massive Chernobyl Event Underway in Japan](#)

*A large explosion at Japan’s stricken Fukushima Daiich nuclear power plant reveals that a meltdown is now underway following the exposure of the core following an [9.1-magnitude earthquake](#).*

*The media in Japan is not reporting this fact in order to prevent mass hysteria.*

.....  
**TOKYO (Nikkei)**—The Nuclear and Industrial Safety Agency (NISA) said Saturday afternoon the explosion at the Fukushima No. 1 nuclear plant **could only have been caused by a meltdown of the reactor core.**

The same day, Tokyo Electric Power Co. **(9501)**, which runs the plant, began to flood the damaged reactor with seawater to cool it down, resorting to measures that could rust the reactor and force the utility to scrap it.

“Officials have said that radiation levels at Fukushima were elevated before the blast: At one point, the plant was releasing each hour the amount of radiation a person normally absorbs from the environment each year,” **reported the Associated Press.**

**Some news outlets** are reporting that the meltdown was a level 4 which means it will only have local consequences. **Whether this level changes remains to be seen.**

Multiple alternative medicine specialists have been quoted as saying that the west coast is likely to get hit.

The Associated Press, **in an article** that was released 23 mins ago(12:09pm pacific) has clearly shown that we are NOT out of danger at this point and that a meltdown seems likely.

**Last night when the explosion initially happened the Japanese media was reporting that there was radiation all over the area and the BBC was even quoted as saying there was simply nothing anyone could do.**

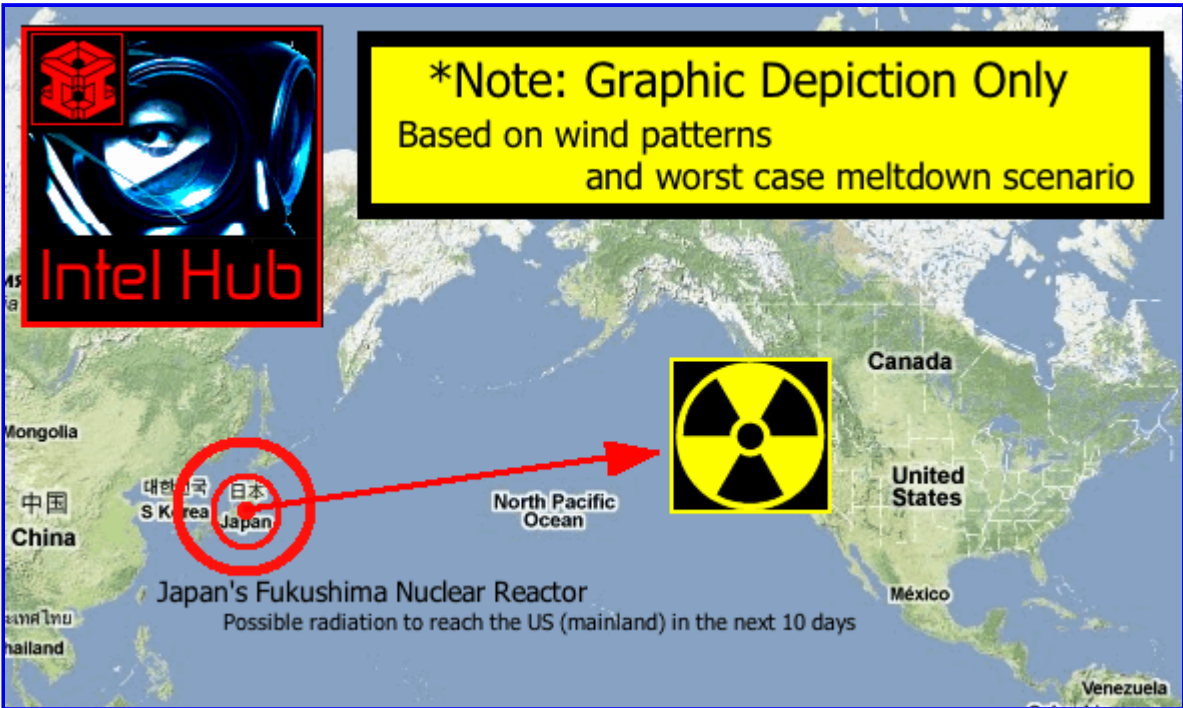
The Japanese Media is reporting that the reactor did NOT explode and that radiation levels are going down. How this is possible and if it is true remains to be seen. Multiple citizens around the area have already been hospitalized from radiation exposure.

Regardless whether or not people want to hear the facts, we will continue to report them. We have no proof that radiation is definitely headed this way but it is very possible

**The Intel Hub**  
**Shepard Ambellas**  
March 12, 2011

We are now some 30 hours into the Japanese earthquake and tsunami disaster that has devastated the region and killed thousands. New information is surfacing from sources by the minute.

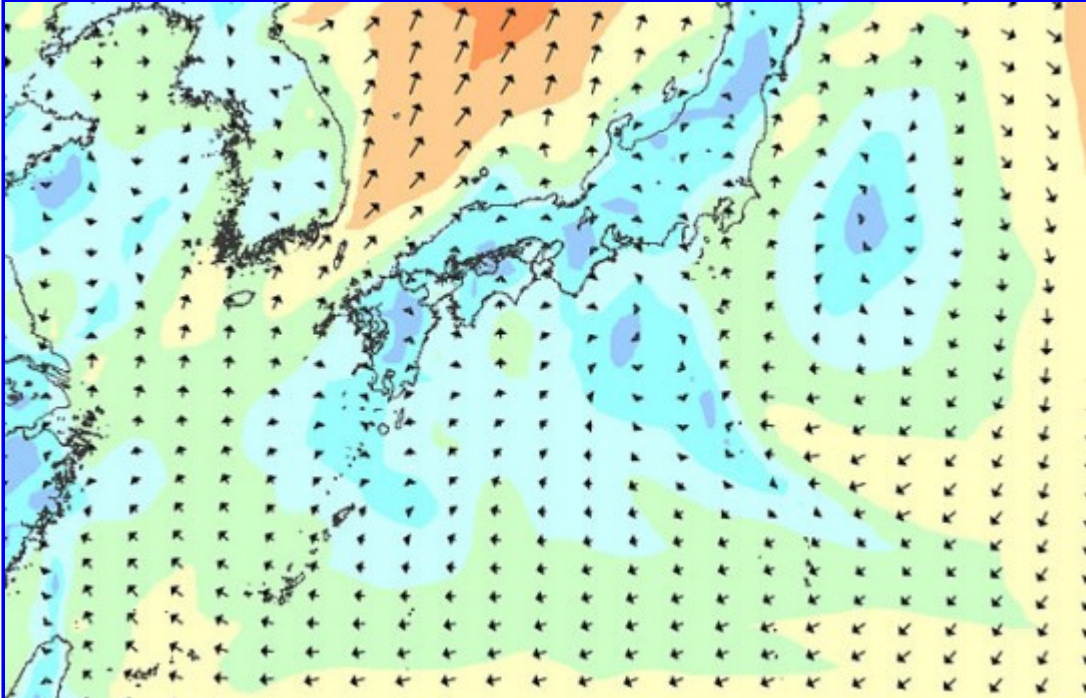
The fact that [Japan's Prime Minister has expanded the nuclear safe zone radius](#) raises even more concerns as to the direction that this event is headed.



There has been an explosion zone set up around Fukushima Daiichi nuclear power plant in Okuma, [Japan](#) signifying the probable meltdown of the plant.

Officials in Japan and the U.S. are scrambling to resolve the situation. A total of 11 nuclear plants have went offline since the earthquake. Some of the Nuclear plants have been restored, however 5 remain in an imminent emergency status at this time.

**2 of the 5 plants that are in imminent emergency status are critical.**

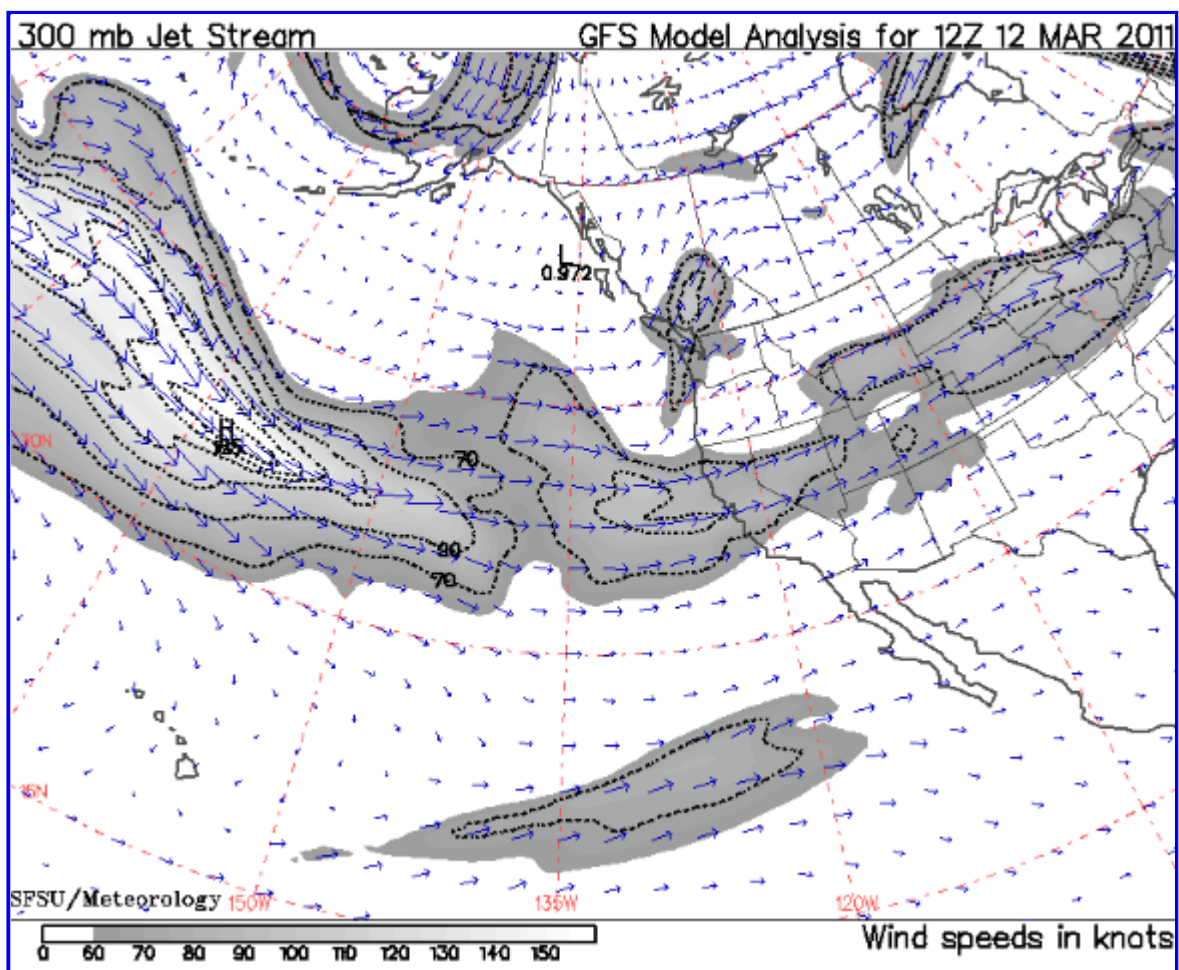


Wind charts reveal that radiation released from the plant will adversely impact nations surrounding Japan.

Things are starting to heat up Saturday as the seriousness of this event is just now sinking in to the minds of most of the population.

Looks like we will be in for a long week. If you live in Hawaii, or the wester U.S. (mainland) you might want to consider

your options.



Source: [SFSU](#)

The following is a report from Global Intelligence;



Global Intelligence

March 12, 2011

*A March 12 explosion at the earthquake-damaged Fukushima Daiichi nuclear power plant in Okuma, Japan, appears to have caused a reactor meltdown.*

*The key piece of technology in a nuclear reactor is the control rods. Nuclear fuel generates neutrons; controlling the flow and production rate of these neutrons is what generates heat, and from the heat, electricity. Control rods absorb neutrons — the rods slide in and out of the fuel mass to regulate neutron emission, and with it, heat and electricity generation.*

*A meltdown occurs when the control rods fail to contain the neutron emission and the heat levels inside the reactor thus rise to a point that the fuel itself melts, generally temperatures in excess of 1,000 degrees Fahrenheit, causing uncontrolled radiation-generating reactions and making approaching the reactor incredibly hazardous. A meltdown does not necessarily mean a nuclear disaster. As long as the reactor core, which is specifically designed to contain high levels of heat, pressure and radiation, remains intact, the*

melted fuel can be dealt with. If the core breaches but the containment facility built around the core remains intact, the melted fuel can still be dealt with — typically entombed within specialized concrete — but the cost and difficulty of such containment increases exponentially.

Some are now speculating that [increased solar activity](#) could be connected to the recent outbreak of earthquakes, along with fluctuations in the earth magnetic field and possibly HAARP. [Massive solar flares have also been reported](#) over the past week.

- **IMPORTANT** – When this article was first posted a picture was used that turned out to **be a fake**. This was a clear accident and has been fixed. All information on this article is up to date and will be updated as more information comes in. The idea that all this confirmed information is not legit because of one picture is being pushed by shills who are working to LIE to the American people. **SEE THIS ARTICLE – [Japan nuclear fallout map – HOAX](#) – The problem with the hoax is that the map was consistent with actual jet stream maps but was labeled as official when it was not.**



## Related Posts:

- [Japan Nuclear Crisis: All Reports Indicate Meltdown Imminent](#)
- [Tritium Leak; Source Not Located](#)
- [Russian Fires Transport Lingering Chernobyl Radiation](#)
- [Russia Today, Wildfires could spread to region irradiated by Chernobyl disaster](#)
- [CBC Reports On Possible Radioactive Fallout Hitting BC Canada!](#)
- [Globalists Plan for Underwater Nuclear Reactors](#)
- [China to invest \\$121.5 bln on Building 10 More Mega Nuclear Reactors](#)
- [America's Eggshell Nukes](#)



**Is this the End of America?**  
In 2011, a single event will likely change your way of life forever. Are you ready?  
Watch the controversial, eye-opening video, free of charge. Then decide for yourself.  
WARNING: Viewer discretion is advised...  
Watch now.

**STILL MAKING DEBT PAYMENTS?**  
CANCEL DEBT / KEEP YOUR MONEY / PROTECT ASSETS  
Visit: [FreeToProsper.com](#) / Call: 877-417-8393

## Comments

51 Responses to “Possible Fukushima Nuclear Fallout Projections For the U.S, Two Plants Meltdown Underway”

1.  [Michael Rivero](#) says:

[March 12, 2011 at 11:47 am](#)

I have to wonder if we would be facing this crisis if the International Atomic Energy Agency had focused on inspecting the safety of the very real power stations of the world instead of wasting all their time and resources trying to find the fantasy nuclear weapons of Iraq and Iran.

PS Looks like Hawaii is out of the way of most of the radiation.

[Reply](#)



o *Shepard* says:

[March 12, 2011 at 11:49 am](#)

I hope so Mike, I have family in Maui.

[Reply](#)



■ *Purim, Extreme supermoon, Sabbath collide* says:

[March 12, 2011 at 4:44 pm](#)

I agree with you Mike. Yet I wish the Iranians hadnt located their site on the Gulf Coast, esp being so earthquake prone. Perfect set up for NWO to take them and all the GCC down with HAARP. Nothing is beyond the Anglo Saxon Mission.

[Reply](#)



■ *MJ* says:

[March 13, 2011 at 12:14 am](#)

2 have reactors melted down. Aftershocks continue.

BBC just reported reactor #3 in imminent danger. Dont know if they'll stick by this or erase. NYt, WaPo and usual lying US media are trying to cover up.

@youtube "cooling system fails @fukushima #3 reactor" includes BBC clip saying the #3 in danger.

[Reply](#)



o *William* says:

[March 12, 2011 at 8:14 pm](#)

Mr. Rivero could not have said it better. I would only ask why aren't Nuclear power stations required to have dedicated, gravity-feed water towers(like municipal water towers) which can be manually valve operated, just in case, or is medieval technology too unsophisticated and cheap for us these days?

[Reply](#)



2. *elfsoul* says:

[March 12, 2011 at 12:15 pm](#)

Thank you for this guys, please stay safe!! God Bless!!!

[Reply](#)



o *Extinction Level Event* says:

[March 13, 2011 at 3:15 am](#)

Drudge is reporting that 6 reactors are melting down. Shep, you were right on the dollar w/ radiation fallout “paranoia”. MSM radically downplaying it.

Happened on 3/11/11- BIG OCCULT SIGNIFICANCE. For the one year anniversary of their other Occult Date attack on humanity, the BP spill (still spewing/ corexit stealth spraying)? Recall in the first weeks they claimed “only 5000 bpd” leaking. Until we had Matt Simmons who blew the whistle.

Now its: “a partial” meltdown?!

This could be the economic meltdown, and health fallout mass panic event triggering martial law? It certainly in the depopulation category.

GET YOUR WATER, GET YOUR \$\$ OUT OF THE BANK NOW!

This woman called this earthquake on Mar 8 and earlier.

[http://www.youtube.com/watch?v=95zMdTvoqcQ&feature=player\\_embedded#at=446](http://www.youtube.com/watch?v=95zMdTvoqcQ&feature=player_embedded#at=446)

[Reply](#)



3. *Lili* says:

[March 12, 2011 at 12:20 pm](#)

No one is mentioning what is going to happen if another wave of earthquakes hits the area while containment is being attempted.

[Reply](#)



o *MP* says:

[March 12, 2011 at 12:47 pm](#)

I think everyone’s avoiding that situation in the hopes it won’t happen...

[Reply](#)



■ *Miles Jefferson* says:

[March 12, 2011 at 5:42 pm](#)

Here is a guy claiming 4 volcanoes have erupted in the last 24 hrs in Japan.

[http://www.youtube.com/watch?v=U\\_Z7vwHzSYw&feature=related](http://www.youtube.com/watch?v=U_Z7vwHzSYw&feature=related)

Now it seems that 5 nuke plants are in danger of leaking.

thanks intel hub for the great work, appreciate it. As all this happened on the esoteric occult day of 3/11/11 is it too far out to wonder if HAARP pinging fault lines or volcanoes may have instigated this series of events? After all, it is Japan who holds alot of our foreign debt. Now it wont have to be repaid. Just a passing thought.

[Reply](#)



o *Andrew* says:

[March 12, 2011 at 5:33 pm](#)

People usually don’t waste time trying to prevent events that are impossible to prevent.

[Reply](#)



4. *DL Rover* says:  
[March 12, 2011 at 12:39 pm](#)

They finally got their nuclear disaster! Even without waging an artificially created war with Iran... Yet with a little bit of help from HAARP maybe?

[Reply](#)



5. *MP* says:  
[March 12, 2011 at 12:45 pm](#)

Let's hope it doesn't come to this!

[Reply](#)



6. *Liam Scheff* says:  
[March 12, 2011 at 12:54 pm](#)

<http://newamericamedia.org/2011/03/japan-tsunami-update-nuclear-power-plant-in-meltdown.php>

The threat is long term...

Much of this area of Japan may be rendered uninhabitable. Reactors can contain hundreds to a thousand pounds of radioactive, highly carcinogenic, mortally toxic material.

Compare this with the thirteen pounds of plutonium in the nuclear bombs that went off.

“The result is that about two and a half of the thirteen pounds of plutonium in the pit, (about 20% of the 6.2 kilograms (14 lb) ) fissioned, and converted probably less than 1 gram (0.035 oz) of mass into energy, releasing the energy equivalent of 21 kilotons of TNT or 88 TJ.”

[http://en.wikipedia.org/wiki/Fat\\_Man](http://en.wikipedia.org/wiki/Fat_Man)

Hundreds to a thousand pounds sitting on earth, versus thirteen, dissipated high into the air.

This is awful, and devastating. Japan as an economic nation may be permanently crippled. The effect on fishing, farming... the place to compare this with is Chernobyl.

It's just deadly and awful beyond belief. This brings into sharp focus the pr moves by the nuclear industry to promote their product as 'safe and clean.'

[Reply](#)



- o *Mike Solstice* says:  
[March 12, 2011 at 2:55 pm](#)

@Anon – You're wrong on that. The closer to the ground a nuclear explosion is, the greater impact it has. Do some research before attempting to slam people.

[Reply](#)



- o *Purim, Extreme supermoon, Sabbath collide* says:  
[March 12, 2011 at 4:41 pm](#)

What a horror and a tragedy after Hioshima and Nagasaki.  
Seems the Ring of Fire is exploding.

[Reply](#)

7.  [Shepard](#) says:  
[March 12, 2011 at 12:56 pm](#)

The fallout map is a graphic depiction based on jet stream and wind conditions. How can that be fake. It is a visual for people to see what might happen if the reactor melts down.

[Reply](#)

- o  [Mike Solstice](#) says:  
[March 12, 2011 at 2:54 pm](#)

Interesting. When I read this article earlier this morning, it did indeed have the logo for the Australian Radiation Services, which you have now covered & still claim it's fact. I've followed Intelhub for the last few years & I now wonder how credible ya'll actually are. It would appear, that, at least with this article, you're inventing the truth as you go along; as are many others on the net. The plume seen exiting the power plant, was not an explosion, according to experts, it was the Japanese attempting to cool the core using sea water & boric acid, which would, naturally, cause steam & is the white "smoke" seen exiting the building. I'm not saying there's nothing to worry about, because there certainly is, but embellishing the truth is not really a good way to get your point across. Just my \$0.02.

[Reply](#)


-  [MJ](#) says:  
[March 12, 2011 at 10:53 pm](#)

Mike, you can not fault Intel hub for calling it an explosion. A lot of the MSM with bureaus on the ground in JAPAN called it that too. RT and Japanese calling out have said there were MULTIPLE EXPLOSIONS. What is your source for the boric acid seawater ingredients? The real issue is that there is so much deliberate lying and coverup by The Big Men of NWO and agitprop agents, it is hard to straighten all of this out. We can not all be experts on everything- like you.

One thing some may not have been thinking of: Japan holds a huge amount of our debt. Did we target them in lieu of repayment or default? PIMCO just dumped ALL US treasuries 48 hours prior to the event. A HUGE RED FLAG no one seemed to notice. Like the pre-911 shorts on AAirlines & others, and Goldman selling off stocks related to Deepwater Horizon before it exploded. Who insures Japanese bond markets? Japan is 3rd largest economy, what will this do to stox Monday morning? Excuse to crash the dollar?

There are those calling this a solar flair event. Huh? There was no solar flair event before Chile, Banda Aceh, Haiti or China- HAARP color clouds were visible before hand in all those cases. We dont know that this is or is not HAARP until more evidence comes in. We dont know if its a meltdown or explosion. But you can be sure the govt will try not to tell us how bad it is.

[Reply](#)

8.  [MP](#) says:  
[March 12, 2011 at 1:38 pm](#)

Nobody at this point is saying that nuclear fallout WILL happen and that map will be completely viable. If you read

any website they are all stating that this is an “if this were to happen” scenario...and there are more websites than just this one mentioning what would happen across the USA if the radiation effects were to enter the Pacific Jet Stream.

[Reply](#)



9. *mike* says:

[March 12, 2011 at 2:31 pm](#)

japan is toast. it is a terrible natural and technological disaster. if and that's a big IF the reactor melts down winds will blow particles all over the northern hemisphere. remember above ground atomic testing by the chinese? the radioactive clouds circled the globe several times. expect governments to downplay any danger until it is too late.

IT'S TOO LATE!!!!

[Reply](#)



10. *john* says:

[March 12, 2011 at 3:20 pm](#)

FIRST OFF HARRP HAS NOTHING TO DO WITH THIS, IT IS COMET ELENIN, LOOK IT UP ON YOU WEBSITES, THEY EVEN SAID WEEKS BEFORE THE EARTHQUAKE IN JAPAN, THAT ON MARCH 11, 2011, THERE WILL BE MAJOR OCCURENCES ON PLANET EARTH, AGAIN THIS HAS NOTHING TO DO WITH HARRP

EVEN Michael Rivero SITE WHERE HE STATES ” VOLCANO ERUPTS IN JAPAN – SAKURAJIMA on top of 8.9 quake video is straight from the japan volcanism cams.. A HUGE ERUPTION TODAY along with the quake! THIS MAKES FOUR VOLCANOES TODAY! 2 in Russia , 1 in Indonesia, and now a huge eruption in Japan itself, ETC ”

THIS ABOUT COMET ELENIN THAT THEY SAY IT MIGHT HIT EARTH , MAYBE, A 50/50 CHANCE, LOOK UP THE SITES ON COMET ELENIN, BECAUSE IN THE NEAR FUTURE LIKE A FEW MONTHS FROM NOW YOU WILL SEE SITES SPEAK ABOUT COMET ELENIN.

[Reply](#)



o *cruisecontrol* says:

[March 12, 2011 at 10:31 pm](#)

If you say it in all caps it becomes true

[Reply](#)

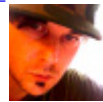


11. *Mike Solstice* says:

[March 12, 2011 at 3:30 pm](#)

LMFAO. I love how my comment ended up posted, directed at the wrong anonymous user. Ya'll are great. I'm not one of the ones that were “attacking” you, I'm one of your daily readers & subscribe to your feed on FB. I just happened to do my own research on this one & found it's completely bogus. Great job Alex.

[Reply](#)



o *Shepard* says:

[March 12, 2011 at 3:37 pm](#)

Not sure why? Is it still in the wrong spot? It's all automated. Let me know.

[Reply](#)



- *Mike Solstice* says:  
[March 12, 2011 at 4:27 pm](#)

Shepherd – these maps do depict actual jet stream currents, and are something I've been watching for over 10 years now. If a nuclear war were to happen, regardless of where the bomb goes off, the U.S. would be hit by fallout. However, the chances of this actually happening with the Japan plants, is very, extremely, minimal. Check out some of the UK news sites, there's a lot of articles out there that explain it better than I ever could. [http://news.sky.com/skynews/Home/World-News/Video-Japan-Quake-Nuclear-Power-Plant-Emergencies-After-Japan-Earthquake-And-Tsunami/Article/201103215950844?lpos=World\\_News\\_Carousel\\_Region\\_0&lid=ARTICLE\\_15950844\\_Video%3A\\_Japan\\_Quake%3A\\_Nuclear\\_Power\\_Plant\\_Emergencies\\_After\\_Japa](http://news.sky.com/skynews/Home/World-News/Video-Japan-Quake-Nuclear-Power-Plant-Emergencies-After-Japan-Earthquake-And-Tsunami/Article/201103215950844?lpos=World_News_Carousel_Region_0&lid=ARTICLE_15950844_Video%3A_Japan_Quake%3A_Nuclear_Power_Plant_Emergencies_After_Japa)

But the long & short of it, is that this is not another Chernobyl due to the excessive safety measures put in place after that incident. The “explosion” people felt, was an aftershock. The “smoke” seen coming from the plant was actually steam caused by the Japanese injecting salt water & boric acid into the core in order to cool it down & prevent a meltdown. Minimal radiation was released. The iodine tablets being passed out in Japan are a precautionary measure. I'm soooooo not one to trust our government, but in this instance, they seem to be telling us (mostly) the truth. Been up since 4am CST researching... apparently my laptop crashes when it reaches 150 tabs open in Firefox. Good to know. LOL

Ya'll would very much be better off taking this article down & hitting FB admitting you fell for a hoax. People are laughing it up & Intelhub is quickly losing credibility.

[Reply](#)



- *Mike Solstice* says:  
[March 12, 2011 at 4:32 pm](#)

Watching MSNBC now...hmm. Might go critical after all. Time will tell I guess.

[Reply](#)



- *Mike Solstice* says:  
[March 12, 2011 at 4:36 pm](#)

Wow. Even someone on MSNBC just said that they don't even believe the Japanese or U.S. Governments are telling the truth & that the public has a right to know if they're in danger.



- *Mike Solstice* says:  
[March 12, 2011 at 4:52 pm](#)

Scratch that. Damn it you were right. My bad Alex & Sheperd, I apologize. Reading the article on InfoWars that just went up.



- *MJ* says:  
[March 12, 2011 at 11:44 pm](#)

Once again—Note Nikkei use of word “explosion”

Meltdown Caused Nuke Plant Explosion: Safety Body

Sunday, March 13, 2011 <http://e.nikkei.com/e/fr/tnks/Nni20110312D12JFF03.htm>


TOKYO (Nikkei)—The Nuclear and Industrial Safety Agency (NISA) said Saturday afternoon the explosion at the Fukushima No. 1 nuclear plant could only have been caused by a meltdown of the reactor core. The same day, Tokyo Electric Power Co. (9501), which runs the plant, began to flood the damaged reactor with seawater to cool it down, resorting to measures that could rust the reactor and force the utility to scrap it.

Japan says partial meltdown likely at 2nd reactor

AP Mar 12, 2011 – Minamisanriku town is submerged after Friday’s strong earthquake-triggered tsunami in Miyagi prefecture, ... TOKYO – Japan’s top government spokesman says a partial meltdown is likely under way at second reactor affected by Friday’s massive earthquake.

Chief Cabinet Secretary Yukio Edano said Sunday that radiation at the nuclear power plant in Fukushima briefly rose above legal limits, but it has since declined significantly. Three reactors at the plant lost their cooling functions in the aftermath of quake and tsunami because of a power outage. Some 170,000 people have been ordered to evacuate the area within 12 miles (20 kilometers) of the plant. The plant is 170 miles (270 kilometers) north of Tokyo..

[http://news.yahoo.com/s/ap/as\\_japan\\_earthquake;\\_ylt=ApWfdsS8z\\_r4a\\_nyj3hp7TKs0NUE;\\_ylu=X3oDMTNqNTI4NHE4BGFzc2V0A2FwLzIwMTEwMzEyL2FzX2phcGFuX2VhenRoc](http://news.yahoo.com/s/ap/as_japan_earthquake;_ylt=ApWfdsS8z_r4a_nyj3hp7TKs0NUE;_ylu=X3oDMTNqNTI4NHE4BGFzc2V0A2FwLzIwMTEwMzEyL2FzX2phcGFuX2VhenRoc)

12.  *Purim, Extreme supermoon, Sabbath collide says:*

[March 12, 2011 at 4:24 pm](#)

2011 Second Arab Revolt begins (as leaked mos in advance by L Williams).

midnite, Mar 4 Obama signs exec order for State of Emergency based on Libya

Mar 7 Obama signs unprecedented Exec Order allowing premanent imprisonment till death for detainees even those WHO HAVE BEEN AQUITTED IN TRIAL BY JURY. Decision up to discretian of POTUS only.

Mar 11 Japan earthquake literally shifts tectonic plates worldwide- to the extent that seismic impact showing up in increased activity in Yellowstone

Alabama Madrid Fault escalating to “harmonic resonance” level of quaking activity

Mar 19 'Extreme Supermoon' said to heighten gravitational imbalances of tectonic plates, volcanoes, earth events etc

Mar 19 Major occult holiday near Vernal Equinox coincides with jewish Sabbath, the full Supermoon and MOST IMPORTANTLY- jewish PURIM. The holiday where jews wreak revenge on their targeted enemies. (For ex, Iraq War was Purim 2003, knocking out long time Israel adversary Saddam-Iraq)

Timeline is unclear and it is hard to maintain readiness at such a high warp level, but we would be well advised to heed Quayle’s warnings. All that’s unclear is the exact hour. We all know somthin’s comin and its not gonna be good.

[Reply](#)

13.  *Don Robertson* says:

[March 12, 2011 at 4:40 pm](#)

There is an appalling lack of cogency here, in both the reporting and the comments of these wanna-be good-guys of the alternative media.

This little bit of world-poisoning coming out of Japan is surely serious.

BUT -GIRLIE MEN- it is a drop in an ocean of empirical world-poisoning happening all over the planet in so many ways, just a small DROP IN THE GROWING WORLDWIDE OCEAN OF EMPIRICAL POISON!

We only read of the tips of so many icebergs of world-poisoning. And these are forgotten -so quickly.

Humanity is not so resilient, fools.

Let me tell you all something- These people in the alternative media are populists and apologists. They are populists and apologists just the same as all the empirical nut-cases who preceded them.

They love their empirical toys regardless how many children will be born with birth defects, AND NAY -that will likely never born at all.

These pig-headed-jackasses honestly believe we all must trudge onward and upward into the mythical Star Trek vision of some inane science-fiction writer.

It will NEVER be, fools.

Not one of you here will ever reach space, Jackasses. You are going to die right here on this planet. Get used to the idea.

The apologists here, led by the inimical empirical hero Mr. "My show! My show!" Mr. "When I worked for Nasa" -Mr. "Aloha!" himself- wants everyone to believe -with just a little bit better science, or maybe a lot better science, none of these scientific problems would ever arise.

Give me a break. There is no logic to his reasoning. It is his despicable BELIEF -and that so many other idiots just like him -that is causing all this world-poisoning.

These forever-tweaking scientific types will mumble their mumbo-jumbo like the old Latin phrases that came from the Catholic Church priests.

"It is unscientific."

Horrors!

It is unscientific?

REALLY????\*@!3#\$\$!!!

It is unscientific?

It is unscientific?

It is unscientific?

You jackass, unscientific is the only way to get out of this crescendo, cresting-wave of an empirical Rube Goldberg mess.

REALITY IS NOT SCIENTIFIC, ANY MORE THAN REALITY IS WITCHCRAFT.

REALITY IS CATEGORICAL, FOLKS.

And you'd better figure that out before it is all gone, and reality is NOTHING for human beings -ever again-.

These god-damned scientists, just like all those before them -do not have a clue.

Live by this-

Life is a party. Don't let anyone fuck-the-party-up, -not some politician, -not some banker, -not some political scientist, -and- certainly not some god-damned scientist.

I am not scientific. And I can tell you the truthful answer to fix what ails the world.

GET RID OF ALL OF THEM. IT'S THE MOST MORAL THING ANYONE CAN DO RIGHT NOW.

GET RID OF ALL OF THEM.

“Speak Your Mind” was the invitation here. Publish it.

Don Robertson  
<http://MaineArtists.US>  
Limestone, Maine

[Reply](#)

14.  *Carol Scaletti* says:  
[March 12, 2011 at 4:57 pm](#)

I am worried because my son lives in Hawaii so he would be much closer than I am in the lower 48. What risk is posed to Hawaii (Oahu) in this???

[Reply](#)

15.  *Alex* says:  
[March 12, 2011 at 5:13 pm](#)

\* IMPORTANT – When this article was first posted a picture was used that turned out to be a fake. This was a clear accident and has been fixed. All information on this article is up to date and will be updated as more information comes in. The idea that all this confirmed information is not legit because of one picture is being pushed by shills who are working to LIE to the American people. SEE THIS ARTICLE – Japan nuclear fallout map – HOAX – The problem with the hoax is that the map was consistent with actual jet stream maps but was labeled as official when it was not.

[Reply](#)

16.  *yokahama* says:  
[March 12, 2011 at 6:00 pm](#)

You guys do a great job and are honest brokers. However, AJ ran a story picked up by many sites that “Bahrain was nerve gassing protesters”. Completely untrue. The allegations had been leveled at YEMEN. AJ can be very irresponsible and unlike intelhub- does not have the integrity to admit errors- just acts like nothing happened while others discredit themselves posting his work. It may be why people are leary in general.


Appreciate your work alot. It is sites like this that push the MSM to tell the truth (sometimes) and give us info we would never have without you!

[Reply](#)

17.  *MP* says:  
[March 12, 2011 at 11:16 pm](#)

Basically nobody can confirm anything, because nobody’s there, right? We’re getting conflicting information. interesting. Who do y’all believe?

[Reply](#)

18.  *Will* says:  
[March 13, 2011 at 1:39 am](#)

The Japanese are saying that they are “assuming” that the core’s are melting down. Assuming a worst-case scenario is not the same as actually melting down. Boric Acid is a very very powerful nuclear poison. They will get the situation

under control. I work at a plant about 350 miles south of Fukushima, so far, our dosimetry is not reporting abnormal levels at all. If there were a meltdown and significant release of fission products, our detectors would be going nuts. The question I have is: Why didn't they add the boron sooner? Were they more concerned with the cost of losing a reactor versus public safety?

[Reply](#)



19. *Howard T. Lewis III* says:

[March 13, 2011 at 1:41 am](#)

Don't forget the jackass engineers who put thermite and nukes into the WTC's during construction. because they were told to. Just like if the banks yank all of the money out of circulation to make us desperate, plenty of you same people, to feed your families, will put on a color-coordinated police-state ensemble and shoot to kill anyone you are told to. We still need to subpoena the engineers of the WTC I, II and 7!!! Then we can work on stopping the genetic fuck-ups who insisted on building these insanely dangerous reactors in the most dangerous geologic hazard zones on earth. RIGHT!!!???

[Reply](#)



20. *elmo rockerchild* says:

[March 13, 2011 at 1:52 am](#)

I want to know, how high is the jet stream, and will any emissions from these reactors reach that high, or will it stay lower and controlled more by surface winds?

[Reply](#)



21. *harry p.* says:

[March 13, 2011 at 3:30 am](#)

passing strangers really piss me off

[Reply](#)



22. *a* says:

[March 13, 2011 at 3:38 am](#)

<http://nationspot.com/viewforum.php?f=497>

Check out the info, Ill be updating with important information. You do not need to register to comment.

[Reply](#)



23. *Eagle* says:

[March 13, 2011 at 3:42 am](#)

Nature is paying back for Hiroshima and Nagasaki

[Reply](#)



24. *Mike Solstice* says:

[March 12, 2011 at 4:17 pm](#)

Yea, well, don't feel that bad...I feel hook, line & sinker as well at first. Just had to call back my mother in California

& tell her she can stop packing the 5th wheel. LOL Gotta love 4Chan... \*sigh\* (I really hate that damn site)

[Reply](#)



25. *Purim, Extreme supermoon, Sabbath collide* says:

[March 12, 2011 at 4:35 pm](#)

Currents blow west to east, yet when Chernobyl blew to the east of EU none of it should have reached EU and yet registered high levels of fallout were measured in Swiss Alps and hurt stocks of Evian water for ex. Quickly 'disappeared' by biz news.

When Iraq War 03 happened heightened levels of the DU dust (gamma or alpha dont recall at moment- will search) all the way to City of London where law enforcement began to investigate for a dirty bomb attack. None thought the particle carriage could flow backwards.

Jet stream also messed up because of changed wind patterns due to currents in Gulf of Mex PB disaster, so many variables in flux.

It does seem however that an ocean of separation will disburse the particles. Think of how many above ground nuke tests were done right in the backyard of Ariz and N Mex and we are all still standing (except the immediate downwinders, God pity them).

[Reply](#)



26. *Miles Jefferson* says:

[March 12, 2011 at 5:45 pm](#)

Shepard,

All appreciate your hard work and honorable intentions, ignore the naysayers' rudeness.

3/11/11 a big occult date. Feedback Anyone ?

[Reply](#)

## Trackbacks

### Check out what others are saying about this post...

1. [Is it possible to play Fallout 3 expansions at the beginning of the game? | Game Wiki](#) says:

[March 12, 2011 at 3:36 pm](#)

[...] Fukushima Nuclear Fallout Projections For the U.S. Based on Wind ... [...]

[Reply](#)

2. [The Progressive Mind » Possible Fukushima Nuclear Fallout Projections For the U.S. Based on Wind Patterns :](#)

says:

[March 12, 2011 at 5:01 pm](#)

[...] Possible Fukushima Nuclear Fallout Projections For the U.S. Based on Wind Patterns :. March 12th, 2011 | Category: Uncategorized | Leave a comment | [...]

[Reply](#)

3. [Q&A: Is it possible to pay student and tuition college loans fast? | Scholarships and Grants](#) says:

[March 12, 2011 at 5:02 pm](#)

[...] Possible Fukushima Nuclear Fallout Projections For the U.S. Based ... [...]

[Reply](#)

4. [Radioactive leaking after nuclear power plant explosion in Japan](#) says:  
[March 12, 2011 at 7:06 pm](#)

[...] (Fox40) MOX fuel loaded into Tokyo Electric's old Fukushima reactor (JapanToday) Possible Fukushima Nuclear Fallout Projections For the U.S. Based on Wind Patterns, Meltdown Confirm... Core of quake-damaged reactor partially melts [...]

[Reply](#)

5. [Japan Quake Nuclear Disaster and More to Come? | The Truther Girls' Blog](#) says:  
[March 12, 2011 at 11:25 pm](#)

[...] On March 11, an 8.9 quake struck Japan, followed by a massive Tsunami and 150 aftershocks. The coastal areas hit by the wave were devastated, but damage to the cities from the quake itself was limited as Japan's buildings are made to withstand quakes. However, the most worrisome aspect of this disaster is the explosion of the Fukushima Daiichi nuclear reactor. Thousands of people have been evacuated from the immediate area, but the fallout may devastate the entire island of Japan and will be heading East to reach the West Coast of the US and Canada over the next few days. You can see coverage of this on the Intel Hub, including a map that shows the path and radioactive output of the fallout . <http://theintelhub.com/2011/03/12/explosion-rocks-quake-hit-japanese-nuke-plant/>  
<http://theintelhub.com/2011/03/12/29810/> [...]

[Reply](#)

6. [Japanese Officials: Two Plants Meltdown Underway | Real News Reporter](#) says:  
[March 12, 2011 at 11:46 pm](#)

[...] 13th, 2011 var addthis\_product = 'wpp-254'; var addthis\_config = {"data\_track\_clickback":true};The Intel Hub Japanese Officials are now operating under the presumption that TWO reactors have either already [...]

[Reply](#)

## Speak Your Mind

Tell us what you're thinking...  
and oh, if you want a pic to show with your comment, go get a [gravatar!](#)

Name (required)

Mail (will not be published) (required)

Website

Submit Comment