

- [Sign Up](#)
- [Sign In](#)

## [Earthchanges College ~ Survive PX](#)

Current news & discussion of Earth Changes & Planet X, and how to survive

- [Main](#)
- [My Page](#)
- [Members](#)
- [Blogs](#)
- [Forum](#)
- [Photos](#)
- [Videos](#)
- [Chat](#)
- [Groups](#)
- [Welcome Center](#)
- [Report An Issue](#)
- [Leaderboards](#)
- [Countdown/Timeline](#)
- [Zetatalk Analysis Series](#)
- [Earth Changes in Review](#)
  
- [All Blog Posts](#)
- [My Blog](#)
- [Add](#)



# ELEnin/Dwarf Star JPL Event Timeline

- Posted by [Amy Evans](#) on June 7, 2011 at 11:00pm
- [View Blog](#)

**NOTICE: This blog is complex and has been on-going for a long time. Before this blog, there was another blog just as big, but it was deleted as Amy explains below. It was reconstructed in part and continued here. We encourage you to read and/or participate. However, you are expected to have read this blog and all the comments from page 1 forward BEFORE you start asking questions. There is much technical and background data you need to know in order to understand. Please DO NOT jump in and start asking questions without having read this entire blog and comments first because it creates too much of a distraction to have to stop what we are doing and explain every time someone has a question that could have been answered if this blog had been read first. Thanks for your cooperation.**

## Here's Amy...

I am really sorry for deleting the other ELE timeline post ... Terral did not have permission to post certain information, and it came back on him in the %\$&. ... which led to a cleansing of the post on a few groups :( But, as sometimes happens, there is a Silver lining under this pile of .... the Brown Dwarf Star has been spotted, and was ID'd from a selection of mug-shots ... it is coming

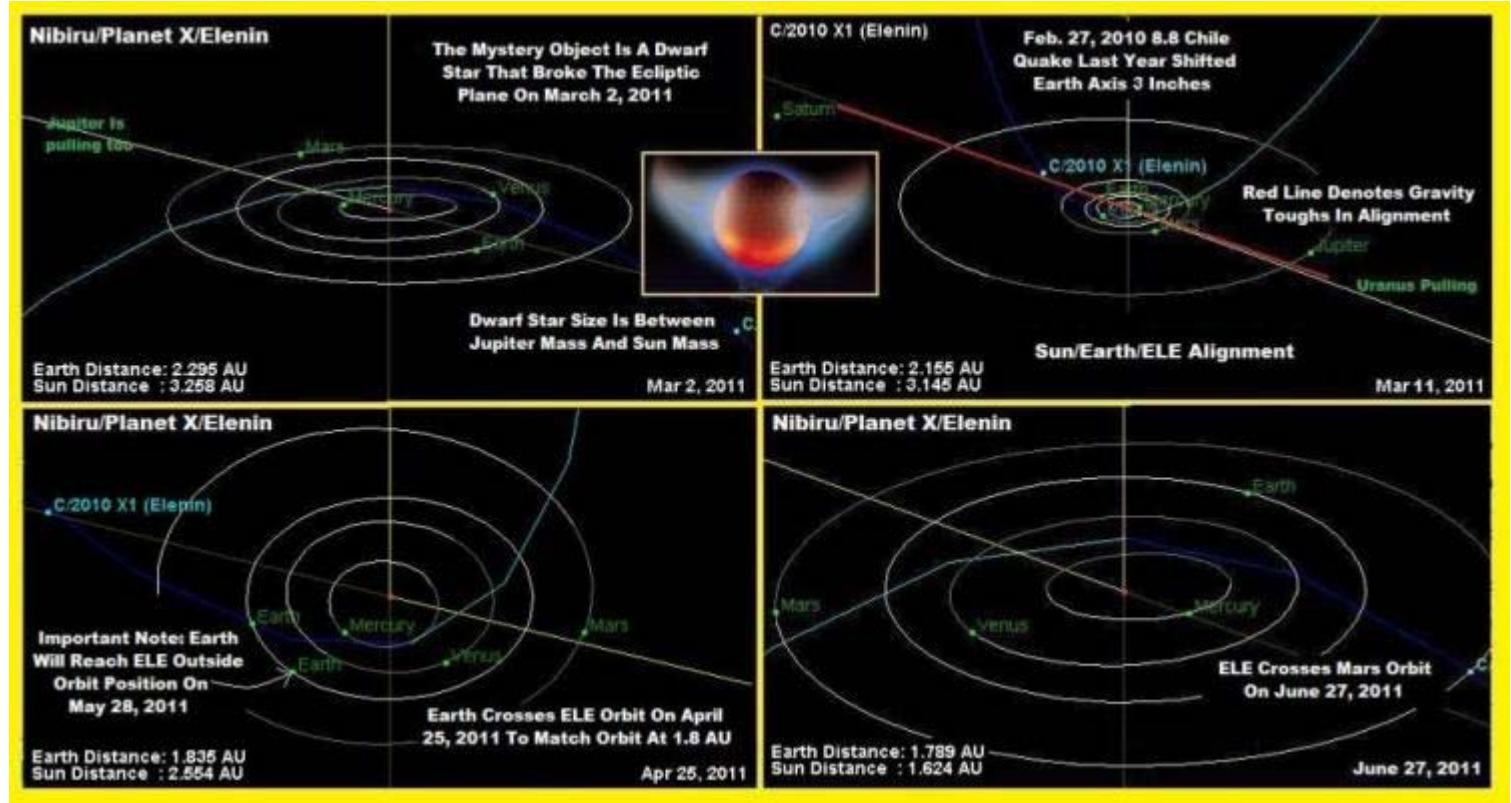
This post covers almost all of the last posting, and was also by Terral.

The timeline below tracks the movement of the ELenin dwarf star in our solar system through 2011 using the NASA Jet Propulsion Laboratory Data for their ELenin Comet Psyop (link).

<http://ssd.jpl.nasa.gov/sbdb.cgi?sstr=elenin;orb=1;cov=1;log=0;cad=...>

=====

Diagram#1



March 2 Dwarf star passes through celestial plane. 0.0 declination. 2.261 AU from Earth.

March 11 Saturn, Dwarf Star, Earth, Sun, Mars, Jupiter and Uranus are in alignment creating gravity trench for volcano/earthquake/tidal events to escalate. First Alignment. 2.1 AU from Earth.

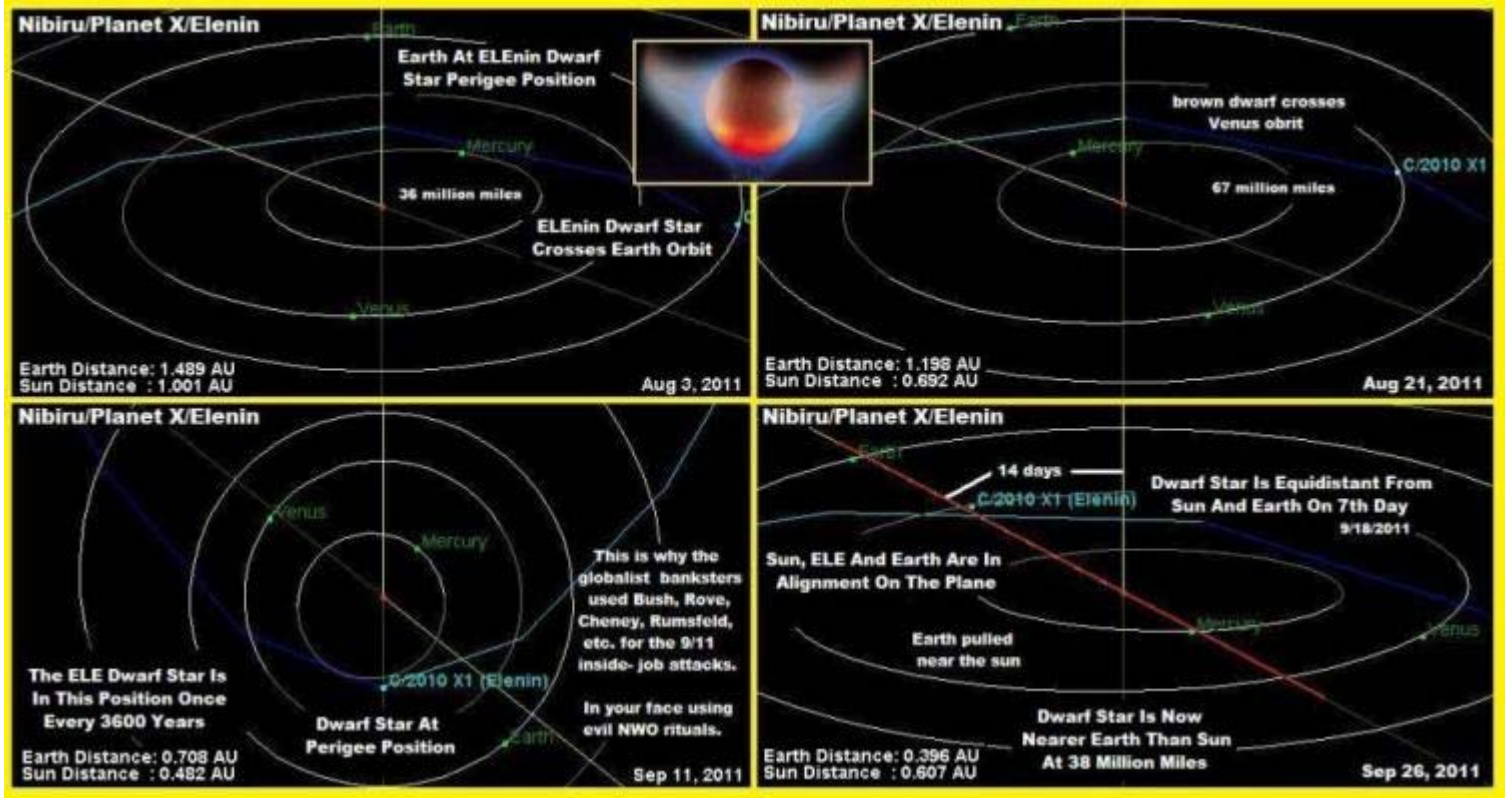
May 11 Earth, Mercury, Venus and Jupiter are in alignment to create optimum conditions for seismic activity. Diagram

April 25 Earth crosses ELE orbit to match ELE orbit at 1.8 AU, or about 170 million miles. 1.835 AU from Earth.

May 28 Earth reaches ELE outside orbit position. 1.836 AU from Earth.

June 27 Dwarf Star crosses Mars orbit. 1.789 AU from Earth.

Diagram #2



July 7 Saturn, Dwarf Star and Sun are in alignment where Saturn should show signs of the dwarf star assuming polarity control. 1.74 AU from Earth. Saturn Diagram.

Aug 3 Dwarf Star crosses Earth orbit and Earth reaches Dwarf Star perigee orbit angle position. 1.489 AU from Earth.

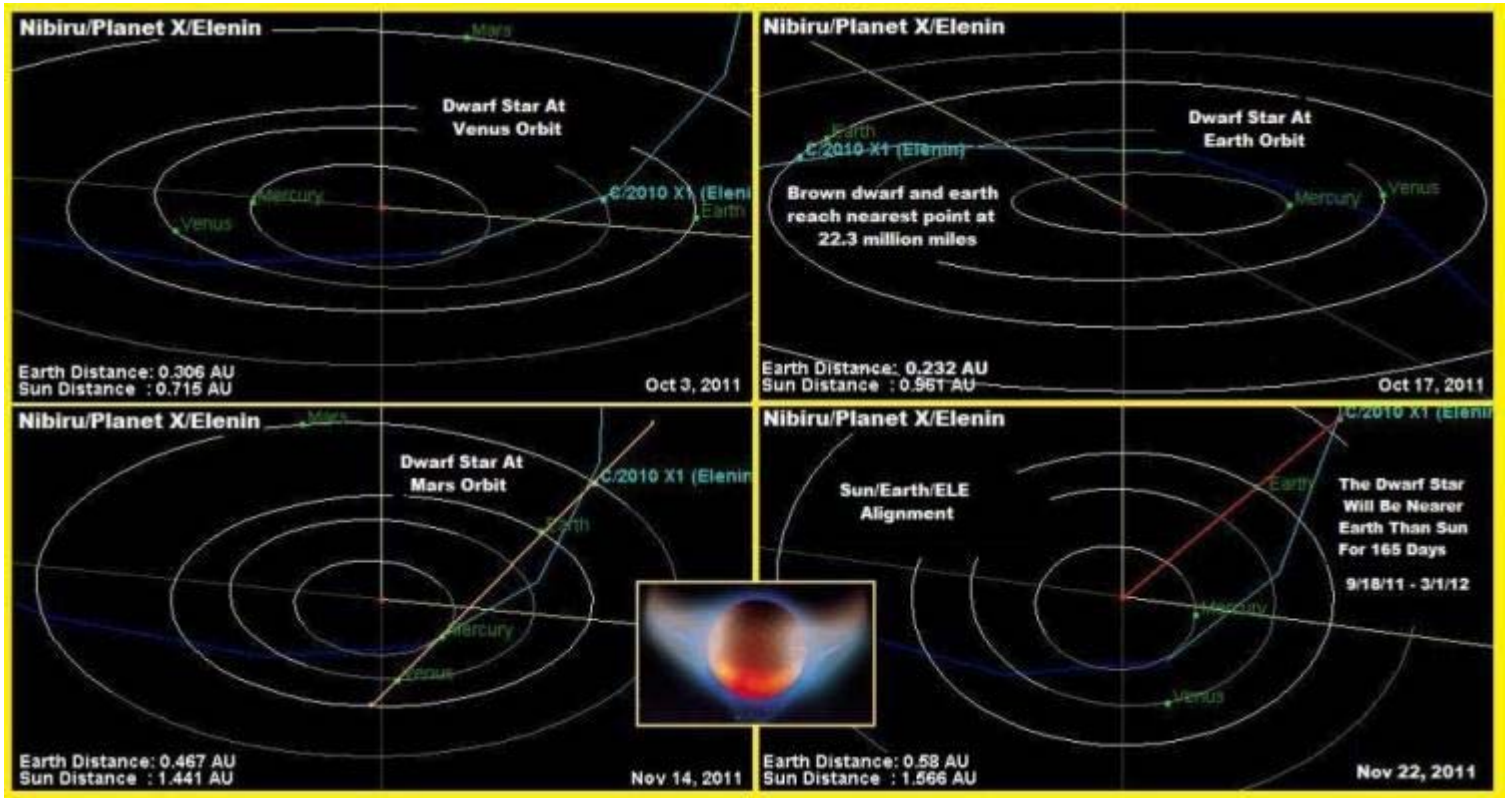
Aug 21 Dwarf Star crosses Venus orbit. 1.198 AU from Earth.

Sept 11 Dwarf Star reaches perigee position and breaks ecliptic plane at Mercury orbit. 0.708 AU from Earth.

Sept 19 Dwarf Star equidistant from Sun And Earth. 0.523 AU from Earth.

Sept 26 Dwarf Star passes between Sun and Earth for second alignment for anticipated Geological Pole Shift Event. Second Alignment. 0.396 AU from Earth. ELE = 0.0 declination with Sun = -1 declination.

Diagram #3



Oct 2 Dwarf Star at Venus orbit. 0.316 AU from Earth.

Oct 17 Dwarf Star at Earth orbit and nearest position. 0.232 AU from Earth @ 21.57 million miles.

Nov 14 Dwarf Star crosses Mars orbit. 0.46 AU from Earth.

Nov 22 Dwarf Star, Earth and Sun alignment for Pole Shift Reversal Event. Third Alignment 0.58 AU from Earth.

The Dwarf Star will finally be farther from the Earth than the Sun on Feb 29, 2012 marking 163 days from Sept. 19, 2011 that Dwarf Star is nearer our planet than the Sun.

=====

A dwarf star between Jupiter and Sun mass is approaching Earth from @ 10h 38m 24.48s +7 00' 49.68" (link) coordinates at 100,000 miles per hour covering 2.4 million miles each day from the Leo Constellation moving towards 44 Leo to break through the ecliptic plane on March 2, 2011. The dwarf star with a planetary object (Planet X) and multiple moons (pic is currently on an inbound trajectory between Jupiter orbit and Mars orbit to reach Mars orbit on June 25, 2011).

The dwarf star being currently tracked by NASA as the Psyop Leonid ELenin Comet that came into alignment with Sun and Earth at the first of three alignments on March 11, 2011; which is what all the false flag psyop disinformation is calling the pole shift. The dwarf star was still too far away (2.1 AU) to assume polarity control of the Earth from the Sun. This March 11 alignment coincides with the February 27, 2010 ELE/Earth/Sun alignment that shifted earth aquifers and shifted Earth axis 3 inches with the 8.8 Chile Quake. The magnetic poles of our planet are not shifting, but are 'migrating' from the approach of the dwarf star mini solar system and the powerful magnetic field and polarity entering our inner solar system; which has been going on since 2004. The dynamic gravitational Tug-of-War between the Sun, Earth and Dwarf Star is enhanced by the near-alignment of seven planetary/solar bodies at this alignment shown in the first diagram above and demonstrated by a red alignment line depicting extreme gravitational force. These orbiting objects are connected to the Sun by magnetic portals (link), which the Earth passed through on 2/27/2010 and 3/11/2011 that connects the dwarf star to the Sun. The next major event for Dwarf Star is June 27, 2011, when the dwarf star crosses the Mars orbit. Then on July 7, 2011 the ELenin dwarf star passes between the Sun and Saturn orbiting above the ecliptic plane, which should reveal some evidence that the dwarf star is attempting to gain polarity control over the ringed planet.

Diagram 2 starts at August 3, 2011 when the dwarf star crosses Earth orbit to then cross Venus orbit on August 21, 2011. Then we see the ELenin dwarf star reach perigee position nearest the Sun on September 11, 2011 exactly ten years from the 9/11 attacks (What Really Happened, when the dwarf star begins the 3600-year orbit once again. September 26, 2011 marks the day of the next alignment, when the dwarf star is only 0.396 AU from Earth (36.8 million miles); when the dwarf star is expected to gain polarity control over the Earth and cause the Geological Pole Shift. This marks the time when the Earth will bow to the dwarf star's awesome magnetic field/polarity, so the northern hemisphere experiences many days of darkness; while the southern hemisphere is drawn nearer the Sun. There are 14 days between the dwarf star reaching perigee position and this alignment with the Earth and Sun being equidistant to the dwarf star on the 7th day (Sept. 18).

October 2 is the day that the ELenin dwarf star crosses Venus orbit again to begin trekking in the direction of Earth. Our planet is still being pulled towards the Sun, but by this time we are also being pulled forward into the massive dwarf star gravity well. Two weeks go by (Oct. 17) and the dwarf star crosses the Earth orbit line to pass directly in front of our planet at just 21.57 million miles away, which is the nearest point in our encounter. The dwarf star crosses the Mars orbit line on November 14, 2011 on way to the third alignment on November 22 where the Earth passes directly between the two once again like on March 11. This marks the time of the Geological Pole Shift Reversal that tips the Earth back to near the current position, as the Sun regains polarity control from the dwarf star racing away from the inner solar system.

Related videos:

<http://www.youtube.com/watch?v=Qi7wpEIGU0I>

<http://www.youtube.com/watch?v=UcJzLBcDdzM>

Related links:

<http://www.usmessageboard.com/conspiracy-theories/76652-surviving-t...>

<http://dprogram.net/2008/05/21/as-america-collapses-us-government-s...>

GL,

Terral

[Share](#) [Twitter](#) [Facebook](#)

Views: 8889

Tags: [dwarf](#), [elenin](#), [event](#), [jpl](#), [star](#)

- [< Previous Post](#)
- [Next Post >](#)

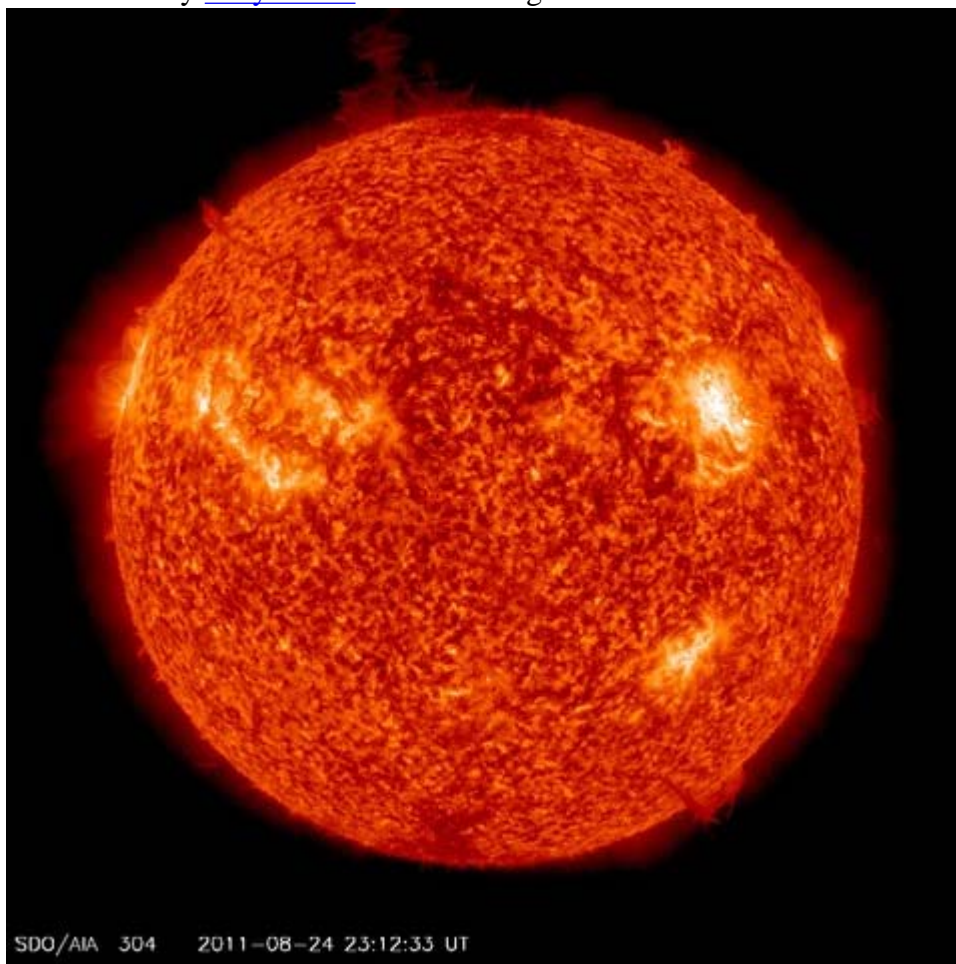
Comment

**You need to be a member of Earthchanges College ~ Survive PX to add comments!**

[Join Earthchanges College ~ Survive PX](#)



Comment by [Amy Evans](#) 27 seconds ago



SDO/AIA 304 2011-08-24 23:12:33 UT

[A very ticked off Sun .....](#)



Comment by [Amy Evans](#) 3 minutes ago

With all the weird stuff going on, I decided to make the BX2 precursor sensor a little more robust. It now has an amplification factor of 5 million(134dB) vs its old 1 million(120dB).

Jim



Comment by [Amy Evans](#) 5 minutes ago

Thank you, Jorge. It's great to hear from you too. After reading your reference I was thinking about how lightning in Inca drawings represents a link between heaven and earth. This quote from Wikipedia sounds like a children's story version of the original, but it made me smile:\* "Illapa ("thunder and lightning"; aka \*\*Apu Illapu, Ilyap'a, Katoylla) was a very popular weather god. His holiday was on July 25. He was said to keep the Milky Way \*i\*n a jug and use it to create rain."\*

Here's a report on today's Peru jungle quake from the editor of \*Peru This Week\* in Lima, Peru:

"We were hard at work putting the final touches on the newsletter today when the floor began to shake, just enough for us to take notice. The water in the cooler moved around a bit, and the pedestrians on the street below looked a little dumbfounded. Just a little tremor, we thought. We made some jokes about the Washington, D.C. earthquake finally reaching us here in Lima, and then went back to work. As we learned minutes later, for those in Pucallpa, Tingo María and Iquitos, today's earthquake must have been a much scarier experience. The 6.9 (or 7.0, depending on which media source you choose) earthquake apparently made the earth there "swing like a hammock." The good news is that so far, there are no reports of major damages or of injuries. We hope that as the news comes in from the rural areas, we learn that the small communities fared just as well. So far, at least, it seems that the jungle was spared devastation by the great depth of today's earthquake."

Anne



Comment by [Amy Evans](#) 7 minutes ago

body

Yeah, you can go here at any given time and see the exact frequency for the most effective HAARP transmissions:

<http://137.229.36.30/cgi-bin/digisonde/latest.cgi>

Jim



Comment by [Amy Evans](#) 8 minutes ago

THX :->Mike

On 8/24/11, James a target="\_blank" rel="nofollow"

href="mailto:jimpat999%40yahoo.com">jimpat999@yahoo.com> wrote:

> Kent, those little dots are from an Ionosonde mapping the frequency and

> height of the F2 layer. That is also the layer HAARP targets.

> Since the bottom line on the HAARP HF spectrum monitor is 1MHz, you can see

- > the Ionosonde working between about 2 and 6MHz.
- > Here's a chart showing an Ionogram of the F2 layer:
- > <http://upload.wikimedia.org/wikipedia/commons/thumb/6/69/Ionogramme...>
- > When HARRP is operating, they usually target the frequency they get from the Ionosonde measurements.
- > Jim



Comment by [Amy Evans](#) 15 minutes ago

The earthquakes did tie in nicely with the alignment of Venus, Sun, Mercury, and Earth.

Dave



Comment by [Amy Evans](#) 15 minutes ago

Hi Phil,

Terracycles is one of my sites. The microquakes are being driven by something deep underground. Further, the microquakes are not increasing uniformly across the planet. The distribution is uneven in time. It is as though the different regions of the Earth are all responding to the same cause, but in different ways. It likely means the molecular content of the crust and magma is important in this process.

My main hypothesis is that something in the Milky Way galaxy, such as bands of alternating mfxd particularly around the magnetic plane, which we are now passing through, is changing the basic molecular and atomic processes of our solar system. A significant change in mfxd would change the distances between the quantum spaces of space and thus change the relative strength of the forces within molecules and atoms.

Mainstream science views space as a static and constant medium, despite the observations of General Relativity, Sagnac effect, and other space bending phenomena. These changes in space structure have a profound effect on the matter, which resides in that space.

And so the molecules of Earth, the Sun, and other bodies are experiencing different fundamental background conditions, which are changing the way matter in these bodies behave.

The variations in microquake behaviors of various regions of the Earth are apparently an effect of these changing environmental dynamics.

Dave



Comment by [Amy Evans](#) 17 minutes ago

body

No, HAARP is NOT operating in the ULF range. They have been transmitting in the 2.5 to 7 MHz range. Current experiments they are doing are not generating ULF signal by-products. I tuned in to some of their signals last night and they were solid carriers, not sweeping mixer products that would produce ULF products in the ionosphere.

Also, they have mostly been running at below full power output if the intensity of harmonics on the spectrum display is any indication. I guess you could accuse Voice of America or Radio Havana of causing the earthquakes just as much as you could accuse HAARP.

Zack



Comment by [Amy Evans](#) 18 minutes ago  
Hi Kent and all...

I've been trying to keep up on everyone's posts.. Still in a little fog here... but something dawned on me this morning.

When the east coast EQ occurred everyone of course looked to HAARP. But what if there's a lag in time for an effect to take place. HAARP is operating in the ULF range, right? That's ground propagation.. If the signal goes across the surface of the earth, the energy would produce EMF heating. This heating would produce changes in tensions within the crust... so depending on what's heated and at what angle they are positioned .. this could take more or less time to have an effect....I was just thinking that maybe there might be some secret knowledge as to figure or predict what outcome may occur given a certain amount and duration of propagated energy might have.

Does this sound crazy. But all this could be lost in daily temperature changes. And then one looks at planet alignment and sees correlations. I can't find my link to that sight that was posted a few weeks ago.. would be interesting to see now!

I was looking at a sight this morning that is looking at the changes in frequency of micro quakes (<3.0 R) There's an apparent increase in those on the west coast. Is this because of gravitational changes?

<http://www.terracycles.com/joomla/>

on terracycles

Here's some stuff going around...

<http://www.forbiddenknowledgetv.com/page/4641.html>

Best Regards

Phil

Lat: 40.8367633

Long: -74.1768412



Comment by [Amy Evans](#) 20 minutes ago

EFXD rises and sets with the Sun, MFXD does the exact opposite.

A lot of the spikes in the EFXD precede their opposite number in the MFXD by about 8 minutes, so apparently are due to solar action.

Learning a little every day.

Jim

- < Previous
- 1

- [2](#)
- [3](#)
- ...
- 
- [196](#)
- [Next >](#)
- Page 2

Go

[RSS](#)

Welcome to  
Earthchanges College ~ Survive PX

[Sign Up](#)  
or [Sign In](#)

## EARTHCHANGES SCIENCE DEPARTMENT

### EVIDENCE FOR A FALL 2011 APOCALYPSE

<http://earthchanges.ning.com/profiles/blogs/9nania-is-back-evidence-for>

#### IMPORTANT:

### TERRAL CROFT's 7-7 Warning Video & ELE Threat Level Assessment

<http://earthchanges.ning.com/profiles/blogs/terral-crofts-elenin-threat>

#### LATEST:

Elenin Update: Visual on Brown Dwarf/PX ... MAJOR EARTH CHANGES THIS SUMMER ... SEPT/OCT  
PASSAGE ... GET READY!

### The New Elenin-Dwarf Star Timeline Blog

<http://earthchanges.ning.com/profiles/blogs/elenindwarf-star-jpl-event>

### CORNELL UNIVERSITY:

#### Moon Orbit Wrong!

<http://earthchanges.ning.com/profiles/blogs/moon-orbit-wrong-cornell>

[to be reconstructed]

Cornell University reporting Comet Elenin to cause increase in earth-quakes ~ Astronomical alignments as the  
cause of ~M6+ seismicity--see Cindi's comment at

[http://earthchanges.ning.com/profiles/blog/show?id=6126809%3ABlogPost%3A85387&commentId=6126809%3AComment%3A85410&xg\\_source=activity](http://earthchanges.ning.com/profiles/blog/show?id=6126809%3ABlogPost%3A85387&commentId=6126809%3AComment%3A85410&xg_source=activity)

Direct Link: <http://arxiv.org/abs/1104.2036>

### JOHN DiNARDO EXPLAINS THE SCIENCE CAUSING THE EARTH CHANGES ...

#### John DiNardo Introduction

<http://earthchanges.ning.com/profiles/blogs/introducing-john-dinardo>

#### Fasten Your Seatbelts, Planet Earth

<http://earthchanges.ning.com/profiles/blogs/from-john-dinardo-fasten-your#comments>

#### Planet X Is Now Located



### **Earthbound Planet X Is Now Near Jupiter**

<http://earthchanges.ning.com/profiles/blogs/earthbound-planet-x-is-now>

### **Earth Wobble In The News**

<http://earthchanges.ning.com/profiles/blogs/email-from-john-dinardo-earth>

### **Washington Post PX Evidence & Explanation of Cause of Earthchanges**

<http://earthchanges.ning.com/forum/topics/washington-post-px-evidence>

### **Hercobulus/PX Location from Avebury Manor Crop Circle Incorrect**

<http://earthchanges.ning.com/profiles/blogs/email-from-john-dinardo-1>

### **Why Earth is Now Bombarded by Gamma Ray Bursts**

<http://earthchanges.ning.com/forum/topics/why-earth-is-now-bombarded-by>

### **Solar Scorching Coming**

<http://earthchanges.ning.com/profiles/blogs/solar-scorching-of-earth-soon>

### **Why Are Bugs Swarming Out Of The Ground? The Piezoelectric Effect**

<http://earthchanges.ning.com/profiles/blogs/email-from-john-dinardo>

### **U.S.G.S. Says "Gulf of Mexico Land Masses Will Arise" (and Why BP Was Drilling There)**

<http://earthchanges.ning.com/forum/topics/usgs-says-gulf-of-mexico-land>

### **AMY EVANS' BLOGS:**

#### **New Images of Elenin**

<http://earthchanges.ning.com/profiles/blogs/new-images-of-elenin>

#### **Is There A Connection Between Elenin & Earthquakes?**

<http://earthchanges.ning.com/profiles/blogs/is-there-a-connection-between>

#### **Bob Evans' Interview Re**

#### **Comet Elenin**

<http://earthchanges.ning.com/profiles/blogs/is-there-a-connection-between>

## The Length of the Tail of Comet Elenin

<http://earthchanges.ning.com/profiles/blogs/is-there-a-connection-between>

## StarViewer Team Bombshell: NASA Revises Orbit to Close Approach of 0.24 AU

<http://earthchanges.ning.com/profiles/blogs/starviewerteam-bombshell-nasa>

## Something Very Wicked

### Approaches

<http://earthchanges.ning.com/profiles/blogs/something-very-wicked>

## Comet Elenin Could Hit Earth

<http://earthchanges.ning.com/profiles/blogs/if-cmes-and-pole-shift-were>

# PROOF DEPARTMENT....

Always demand proof, proof is the elementary courtesy that is anyone's due. —Paul Valéry, "*Monsieur Teste*"

## Is That Winged Object Really Planet X? Maybe Not!

<http://earthchanges.ning.com/profiles/blogs/is-that-winged-object-really>



## Indonesia Plate NOT Collapsing -- The TruEarth Images offered by ZT as "proof" are 11 years old!

<http://earthchanges.ning.com/profiles/blogs/tectonic-plates-collapsing>

## Oh, Buoy! (Misinterpreted buoy charts)

<http://earthchanges.ning.com/profiles/blogs/oh-buoy>

More internet legends at <http://earthchanges.ning.com/profiles/blogs/the-zetataalk-analysis-series>

## About



[Cheryl Nelson](#) created this [Ning Network](#).

## IMPORTANT MISC. LINKS

**Earth Changes in Review by Duane Richtsmeier (chronological listing)**  
<http://earthchanges.ning.com/profiles/blogs/earth-changes-in-review-by-dfr>

### **Connecting the Dots**

<http://www.sott.net/articles/show/232298-Connecting-the-Dots-Cosmic-Changes-Planetary-Instability-and-Extreme-Weather>

### **The Coming: A Boeing Whistleblower's Warning ~ Will a Massive Celestial System Change Our Solar System?**

<http://earthchanges.ning.com/forum/topics/the-coming-a-boeing>

### **8 Strange Earth Changes That May Threaten Civilization**

<http://www.activistpost.com/2011/01/8-strange-earth-changes-that-may.html>

### **Economy News:**

<http://earthchanges.ning.com/forum/topics/economy-news-for-wed-24-aug-2011>

### **Flu Remedies**

<http://earthchanges.ning.com/profiles/blogs/flu-remedies>

### **Earthchanges-related Map Links**

<http://www.greatdreams.com/maps.htm>

### **Survival IQ Tests, Handbook, Etc.**

<http://earthchanges.ning.com/group/survivalinformation/forum/topics/survival-iq-tests-handbook>

### **More survival information at...**

<http://earthchanges.ning.com/group/survivalinformation>

<http://earthchanges.ning.com/group/gardenclub>

<http://earthchanges.ning.com/group/foodstorage>

<http://earthchanges.ning.com/group/aftertimeliving>

### **Remember....**

**LOVE LIVES WHERE THERE IS NO FEAR!**

© 2011 Created by [Cheryl Nelson](#). Powered by .

[Badges](#) | [Report an Issue](#) | [Terms of Service](#)

[Sign in to chat!](#)